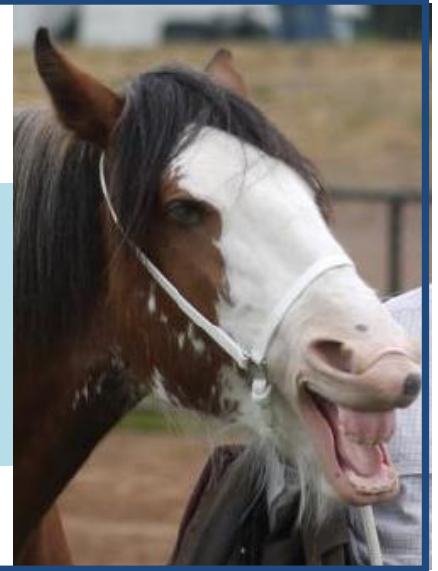




Straight from the Horse's Mouth

November/December 2013



Editor's Report



Silly season is certainly upon us, even the weather isn't keeping a straight face in the lead up to what is meant to be summer. Show season is on the wind down so you will notice the calendar of events has extended into 2014 already. Looking ahead to January, the CCHS Vic Branch is sponsoring the Champion Clydesdale Class at the Royal Melbourne Horse Show (Werribee Park, January). Entries close on the 2nd of December – you can find the relevant link on the CCHS Vic Branch Website.

After hearing many stories of wonder and woe regarding foals for the 2013 season and I have my fingers crossed for those remaining expectant horse and human parents that all flows smoothly. For those new to the foaling game I have thrown in a quick article regarding the important aspects of foaling and issues particular to Clydies. If you have any cute foal pictures it would be great to show them off on the website – please email them to clydesdalesvic@gmail.com.

Of course with Christmas just around the corner, I can't help but end this editor's report on a warm fuzzy note by recommending you take two minutes to view the 2013 Budweiser Commercial, just follow the link <http://www.youtube.com/watch?v=tTbLBL2P6YA>. I think we can all relate to this in some way or another.

Wishing you all a safe and wonderful Christmas and New Year.

Denia ☺

Calendar of Events

November

Sat 30th Pakenham Show
(Note change from normal show date)

December

Sat 7th Neerim Show
Sat 14th Maryborough Show
(Harness only)

January 2014

Sat 18th Lang Lang Show
Sun 26th Royal Melb Horse Show
(Werribee Park)

February 2014

22nd & 23rd National Heavy Horse Festival
(Werribee Park)

Judge Urgently Required

To judge Led Clydesdale classes at Pakenham Show on **Sat 30th November 2013.**

Email clydesdalesvic@gmail.com if interested.



SFTHM

Nov 2013

Junior Competitors

As mentioned in October SFTHM, I hope the SFTHM could provide the opportunity for our readers to learn a little bit more about the future generation of Clydesdale enthusiasts. Coming from a long line of Clydesdale breeders, Mark Marriott from Tatong has made a quick and dramatic entrance to the junior competitor scene. His career started with a bang, precision driving a harness Clydesdale at the National Heavy Horse Festival a few years ago and has since escalated to competing in both led and driven events at the Royal Melbourne Show in 2013. No doubt his older sister Claire sparked his interest and we look forward to some of Mark's enthusiasm and handling skills rub off on younger brother Adam.

Mark Marriott

13 years old

Where do you go to school and what year are you in? : Year 7 at Goulburn Valley Grammar School

Do you know what you want to do when you finish school?: No, not yet

How did you become involved with Clydesdales?: By helping our family out at home and when we go to shows

What is your favourite characteristic of the Clydesdale horse?: Their strength. I am amazed what they can pull with ease.

What is your favourite part of showing Clydies? Harness, I am enjoying learning to drive the harness Clydesdales. I have a couple of good teachers, Pa (*Max Marriott*) and Dad (*Andrew Marriott*)

What would you like to see in future for Clydesdales at the Royal Melb show?: More people(my age) becoming interested in Clydesdales and showing them.

How can we get other young people interested in Clydesdales?: I wish I knew!!!



CCHS Vic Branch Committee Meeting –

Feb 2014

Any members that would like something raised as general business at the next committee meeting, to be held in early February 2014, please contact the Secretary at clydesdalesvic@gmail.com by January 24th 2013.

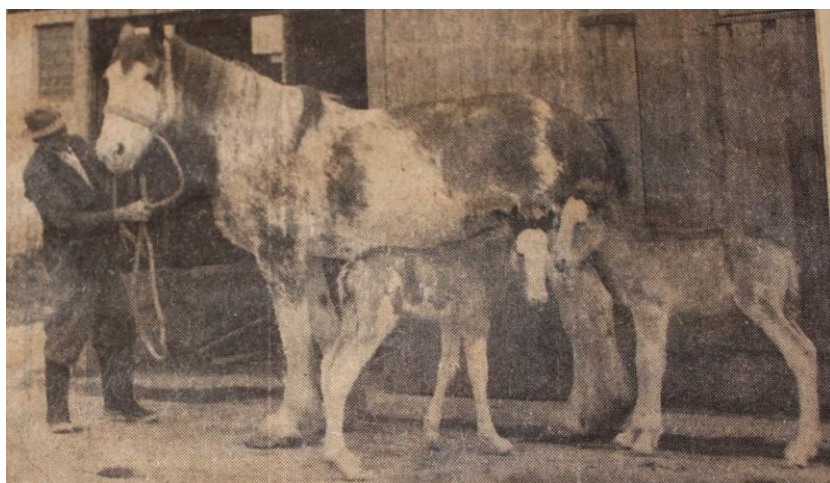


SFTHM

Nov 2013

A step back in time...

With 100 years of Clydesdales at the Royal Melbourne Show approaching in 2014, I thought this would be a good chance to spark people's interest in where the breed we know today started in Victoria. If you have photos or memorabilia start collecting! It would be great to show them off to fellow members – email clydesdalesvic@gmail.com for inclusion on the website or SFTHM – with a goal to create a display at the 2014 Royal Melbourne Show.



Keeping foals in mind, grandma Dot Barrie had a picture answer for this too. Again, Archie McLean makes the newspapers in the 60's, this time with his twin foals. Although the pictures aren't quite as glossy as the recent Mullenger twin foals featured in the Weekly Times, it was still considered a momentous occasion to have healthy twin foals hit the ground.



SFTHM

Nov 2013

Fast foaling facts...

This isn't a topic that can be covered thoroughly in such a small space, however I think we can squeeze a few important points regarding foaling and foals.

- Gestation of approx 11 months → stage 1 labour (restlessness, pacing) → stage 2 labour (active pushing) which should take no more than 30 minutes to produce foal
 - If mare not making progress within 30 minutes, consult your vet
- Ensure membranes removed from foals face to prevent suffocation then follow **rule of 1, 2, 3**:
 - 1 – Foal should be standing within 1 hour
 - 2 – Foal should be suckling within 2 hours – Clydie foals are often slower than light horse foals, ensure they are bottle/basin fed colostrum if struggling to latch onto teat
 - 3 – Mare should have passed afterbirth – Clydie mares are notorious for retaining their afterbirth/membranes. A vet should be sought for medical treatment if not passed in 3hours
- Colostrum, the first milk, is how immunity to disease is passed from mare to foal – essential for a healthy foal. The most common reasons for failure of colostrum transfer include the foal struggling to drink in the first 12hours of life and if a mare has run milk before foaling.
- Keep foals out of hot sun for at least 48 hours and protect the back of the fetlocks if the hindleg tendons are particularly lax by confining to a clean bedded box and bandaging if needed



SFTHM

Nov 2013

Upcoming Events

2013 has seen a revamp for quite a few Ag Show Horse Schedules. Fortunately for us, many of these new schedules include led, ridden and harness Clydesdales. Below are more details about shows coming up in the near future which would greatly appreciate your support.

Maryborough Show – Sat 14th December 2013

Although no led classes in this year's schedule there are some specific heavy horse harness classes at the Maryborough show. Tie up stalls and wash bays offer extra incentive. Harness starts from 1pm.

Location: Carisbrook Trotting Complex, Chaplins Rd, Carisbrook Vic

Schedule link:

<http://www.vicagshows.com.au/schedules2013/maryborough%20horse%20program.pdf>

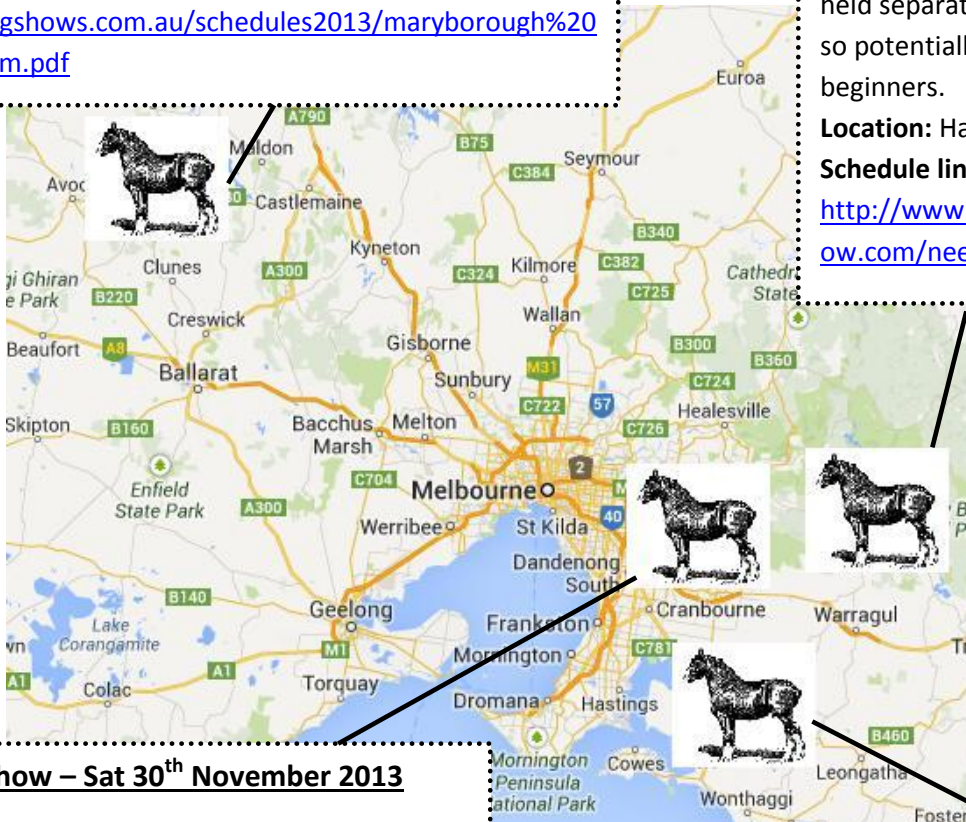
Neerim Show – Sat 7th December 2013

This Ag show puts on a good spread of Clydie/heavy horse classes. Located in the pretty bush scenery north of Warragul this is sure to be a good day out. The horse program is held separately to the main festival so potentially a less scary outing for beginners.

Location: Hamono Rd, Neerim

Schedule link:

<http://www.neerimdistrictcountryshow.com/neerim-horse-show/>



Pakenham Show – Sat 30th November 2013

With the Pakenham Racecourse recently sold for development, there has been a change of plan for their annual show, now holding the horse show separately. Please note the change of date & venue – it would be great to have Clydie numbers there for support.

Location: Akoonah Park, Berwick

Website: <http://www.pakenhamshow.org.au>

Lang Lang Show – Sat 18th January 2014

Lang Lang boasts an impressive horse schedule, with the Clydies generously sponsored by the local post office there are some valuable monetary prizes for champions. Led and reining/precision driving classes on the day.

Location: Lang Lang Showgrounds, 120 Westernport Rd, Lang Lang VIC

Schedule link:

<http://www.langlangshow.org/Home/programs-and-entry-forms>